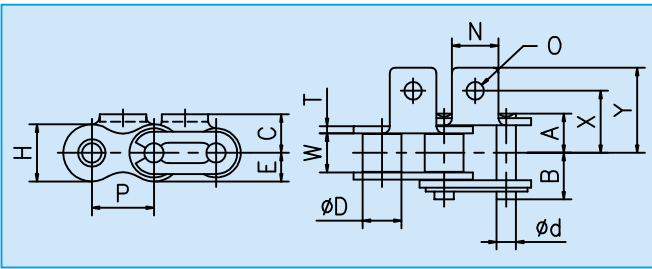


The roller chains fitted with high-precision attachments are best suited for compact conveyors with small pitches and high precision transferring capability.

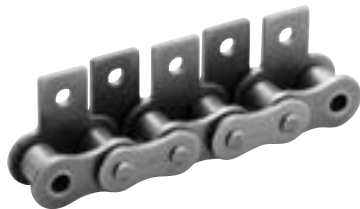
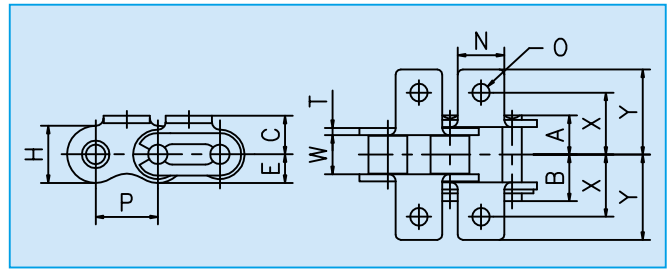
Standard Attachments



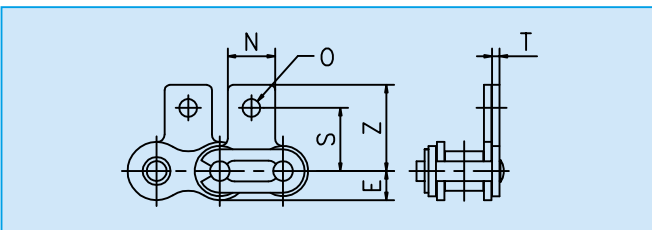
A-1 Attachments



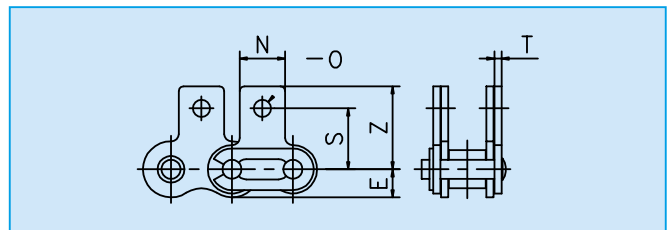
K-1 Attachments



SA-1 Attachments



SK-1 Attachments



○ Dimensions

[Unit: mm]

KCM Chain No.	Pitch P	Width between Inner Plates W	Roller Dia. D	Pin			Link Plate		Standard/Rustop (N)			Stainless steel (SS)		Links of 1 unit
				Dia. d	A	B	Thickness T	Height H	Ave. Tensile Strength kN (kgf)	Max. Allowable Load kN (kgf)	Approx. Weight (kg/m)	Max. Allowable Load kN (kgf)	Approx. Weight (kg/m)	
KCM 25	6.35	3.18	*3.30	2.31	3.80	4.40	0.75	5.8	4.1 (425)	0.64 (65)	0.15	0.12 (12)	0.16	480
KCM 35	9.525	4.78	*5.08	3.59	5.77	7.28	1.25	8.8	10.2 (1,040)	1.52 (155)	0.33	0.26 (27)	0.33	320
KCM 40	12.70	7.95	7.92	3.97	8.07	9.48	1.5	11.7	17.2 (1,750)	2.65 (270)	0.61	0.44 (45)	0.63	240
KCM 50	15.875	9.53	10.16	5.09	10.17	11.63	2.0	14.6	27.9 (2,850)	4.31 (440)	1.01	0.69 (70)	1.04	192
KCM 60	19.05	12.70	11.91	5.96	12.7	14.2	2.4	17.5	39.5 (4,000)	6.28 (640)	1.49	1.03 (105)	1.50	160
KCM 80	25.40	15.88	15.88	7.94	16.15	19.25	3.2	23.0	68.6 (7,000)	10.69 (1,090)	2.50	1.77 (180)	2.62	120
KCM 100	31.75	19.05	19.05	9.54	20.1	23.05	4.0	28.9	106.9 (10,900)	17.06 (1,740)	3.85	2.55 (260)	4.09	96
KCM 120	38.10	25.40	22.23	11.11	25.2	28.6	4.8	35.0	149.1 (15,200)	23.93 (2,440)	5.66	—	—	80

NOTE: Connecting links of KCM80 or larger models are of split pin type. Figures marked with asterisk * imply bush diameter.

○ Dimensions

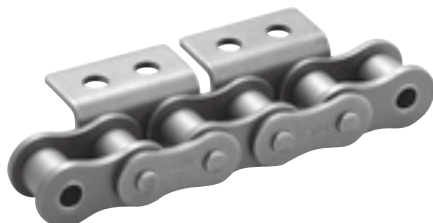
[Unit: mm]

KCM Chain No.	Attachments									Additional Weight per Attachment (kg)	
	N	O	E	C	X	Y	S	Z	A, SA-1	K, SK-1	
KCM 25	5.6	3.4	2.9	4.75	7.15	10.7	7.95	11.9	0.0003	0.0006	
KCM 35	7.9	3.4	4.4	6.35	9.5	13.8	9.5	14.25	0.0009	0.0018	
KCM 40	9.5	3.6	5.8	7.9	12.7	17.4	12.7	17.3	0.0014	0.0028	
KCM 50	12.7	5.2	7.3	10.3	15.9	22.3	15.9	22.3	0.0032	0.0062	
KCM 60	15.9	5.2	8.8	11.9	19.05	27.2	18.3	26.3	0.0056	0.012	
KCM 80	19.1	6.8	11.5	15.9	25.4	35.2	24.6	34.2	0.013	0.026	
KCM 100	25.4	8.7	14.4	19.8	31.75	44.7	31.8	44.1	0.025	0.050	
KCM 120	28.6	10.3	17.5	23.0	38.1	52.5	36.55	50.9	0.038	0.076	

NOTE: KCM attachment chains are available in stainless steel in the same dimensions.

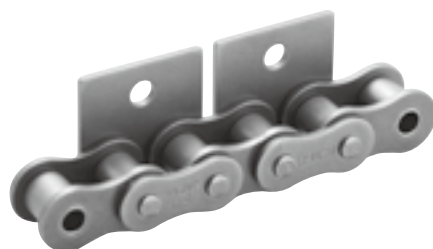
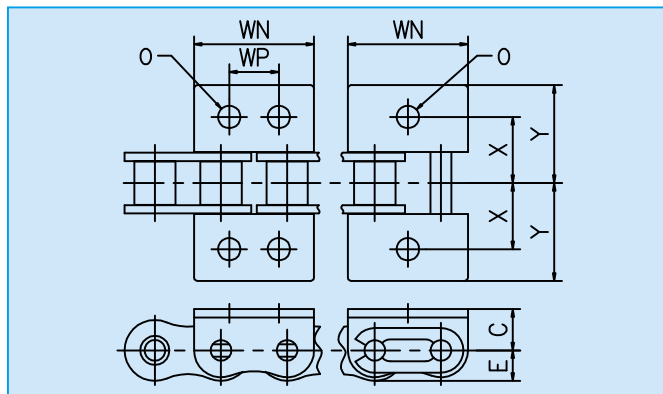
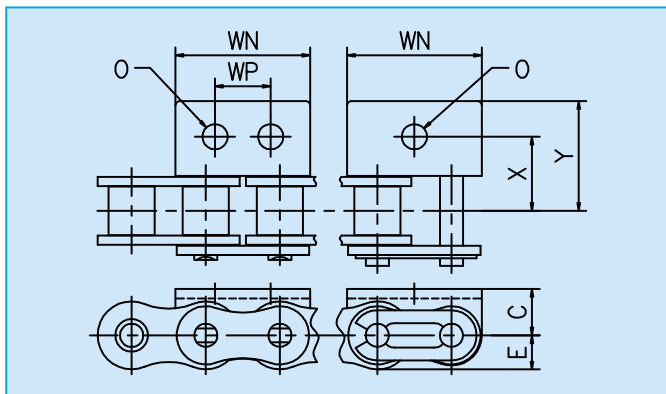
These attachments are a widened version of the standard attachments, which are suitable for large slat and metal pieces.

Wide Attachments



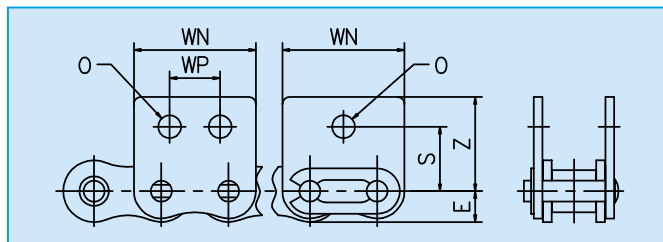
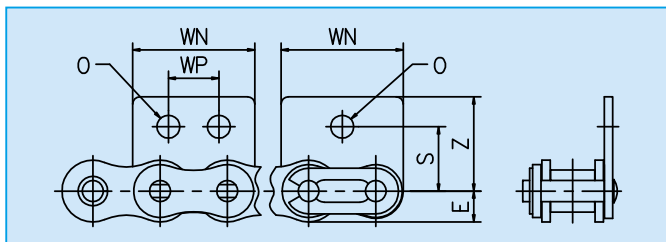
WA-1, WA-2 Attachments

WK-1, WK-2 Attachments



WSA-1, WSA-2 Attachments

WSK-1, WSK-2 Attachments



○ Dimensions

[Unit: mm]

KCM Chain No.	Attachments										Additional Weight per Attachment (kg)		Inner Link WN
	WN	WP	O	E	C	X	Y	S	Z	WA, WSA	WK, WSK		
KCM 40	23.0	9.5	4.5	5.05	7.9	12.7	17.4	12.5	17.3	0.003	0.006	24.4	
KCM 50	28.8	11.9	5.5	7.3	10.3	15.9	23.0	15.9	22.6	0.007	0.014	30.475	
KCM 60	34.6	14.3	6.6	8.8	11.9	19.05	28.2	18.3	26.7	0.013	0.026	36.55	
KCM 80	46.1	19.1	9.0	10.35	15.9	25.4	36.6	24.6	35.4	0.030	0.060	48.4	

NOTE: KCM attachment chains are available in stainless steel in the same dimensions.